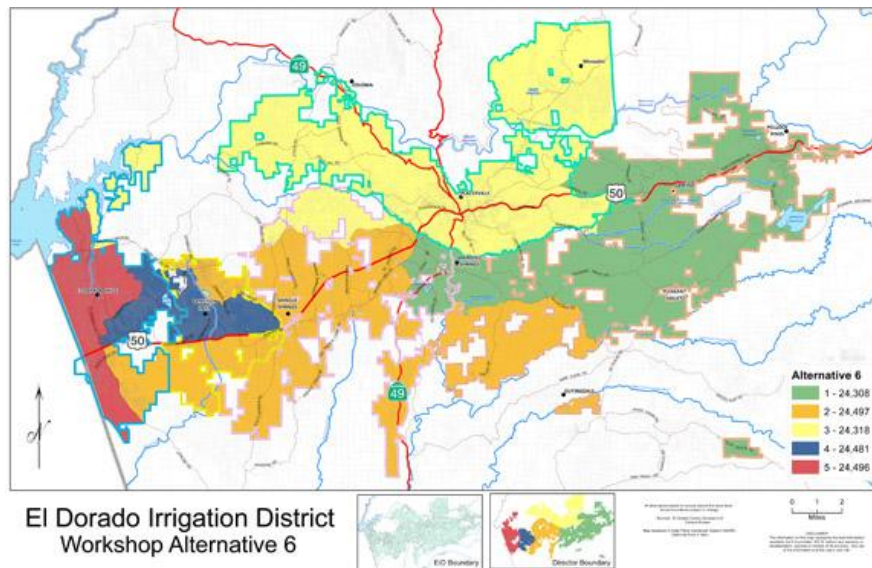

August 22, 2012

CALIFORNIA'S OLDEST NEWSPAPER - EST. 1851

Volume 162 · Issue 45 | 99¢

EID board unanimous on new map



By [Michael Raffety](#)

[From page A1](#) | [1 Comment](#)

With four alternative redistricting maps to study since its last meeting Aug. 8, it didn't take long for the El Dorado Irrigation District to decide on one map Monday.

The unanimous choice Aug. 22 also won universal praise from the three audience members most interested in redistricting.

Despite the 5-0 vote for Alternative 6, Board President Harry Norris built suspense by insisting the board go through all the four alternatives, Nos. 5,6,7 and 8, with Norris doing most of the pros and cons.

"All four maps meet legal requirements, said District Counsel Tom Cumpston, who was assigned the redistricting task and appointed a blue ribbon panel to go through each parcel census tract by census tract.

"I was a member of the committee," said El Dorado Hills resident Bob Luca. "I just want the board to know how hard we worked. I felt all the maps were good. Where directors live — we put that aside. We tried to keep communities of interest together and the population equal."

“I attended all the EID redistricting sessions,” said Greg Prada of Cameron Park, who was allowed as an observer of the committee’s work. I wish Tom Cumpston had run the county redistricting.”

“I don’t think Tom does,” said Director John Fraser.

Prada continued, “The preparations for the committee were impeccable. The committee did a phenomenal job. All of these maps will work.”

“The committee members are to be complimented on the work they did,” said El Dorado Hills resident Jon Jakowatz, another observer of the committee meetings.

Alternative 6 has most of El Dorado Hills as one district from Folsom Lake to the Four Seasons senior development and the El Dorado Hills Business Park. That is District 5, currently represented by Harry Norris.

Serrano, however is part of the district that includes Bass Lake Hills and Cameron Park. That is District 4, currently represented by George Wheeldon.

District 2 on the new map includes the rural south county, but wraps around Cameron Park north of Green Valley Road. It is currently represented by Director John Fraser.

District 3 includes Placerville, Mosquito and the Luneman Road area, mostly following Weber Creek as its southern boundary. It is currently represented by Bill George.

District 1 includes Diamond Springs, El Dorado, Camino, Pleasant Valley and Pollock Pines. It is currently represented by George Osborne.

Under Alternative 6 all current directors’ residences will be in the new district boundaries. The map will not go into effect until Dec. 5, after the Nov. 8 election. The redistricting could not meet the 180-day deadline before the election, partly because of the lateness in receiving the census tract information from the federal government.

Director George Osborne was the first to declare his preference for Alternative 6.

“One of the attributes of 6 is I think it well recognizes agriculture is the economic base of the county. People move here because of the open space, the wineries. It’s important to maintain the viability of agriculture in the county. In addition it addresses the community of interest of Diamond Springs and El Dorado,” Osborne said.

Diamond Springs resident Richard Boylan echoed those sentiments later, praising agriculture and keeping Diamond Springs and El Dorado together.

“I strongly support Alternative 6 and will gladly give up Outingdale,” Osborne added in jest.

Outingdale under Alternative 6 becomes part of District 2, while Strawberry and Slug Gulch Road become of Osborne's District 1.

"I would like to support Alternative 6. The top reason is it keeps me in my district," said Director George Wheeldon.

"There's an honest man," said Board Chairman Harry Norris.

Wheeldon added that he liked it because it consolidates Cameron Park and Bass Lake subdivisions.

"It's not a bad map. It's one of my favorites," Norris said.

"If we don't protect agriculture, we'll have condos in Apple Hill," Osborne said. "We look for the good of the district as a whole, not just our own little world.

"I like Alternative 6 for the other reasons stated," said Director Bill George. "The major population area of Cameron Park is intact. I think it does a better job of that."

Added to George's district will be the large acreage rural area north of El Dorado Hills on Salmon Falls Road.

Wheeldon made the motion for Alternative 6, with George seconding and the board voting unanimously for Alternative 6.

"When asked, I would say Alternative 6 is my favorite," said District Counsel Tom Cumpston.